

DENSETEC™
SIGN



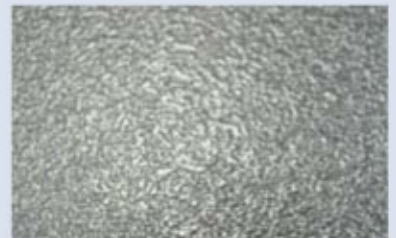
PLAYCRAFT <http://www.playcraftsystems.com/HDPE>

High Density Polyethylene Sheet – PE 300

APPLICATIONS

- | | | |
|---------------------|-----------------|------------------|
| Pools | Parks | Marinas |
| Signage | Churches | Schools |
| Advertising | Ski Slopes | Playgrounds |
| Golf Courses | Water Parks | Nature Trails |
| Campgrounds | Condominiums | Municipalities |
| Apartment Buildings | Amusement Parks | Sports Complexes |

Any Outdoor Application which requires UV inhibitors



Orange Peel Finish



DENSETEC™ SIGN



FEATURES

- Easily cleaned
- Graffiti resistant
- Resists scratches
- Will not delaminate
- RoHS & REACH compliant
- UV stabilized
- Easily fabricated
- Will not swell or rot
- Will not crack or chip
- Never needs painting

COLORS

- Red/White/Red*
- Red/Yellow/Red*
- Green/Beige/Green*
- Yellow/Blue/Yellow*
- Yellow/Black/Yellow
- Blue/White/Blue*
- Blue/Yellow/Blue*
- Beige/Green/Beige*
- Yellow/Red/Yellow*
- Black/White/Black

*FDA approved colors

SIZES

	<u>Extruded</u> inch / mm
Thickness	0.5 & 0.75 / 13 & 19
Sheet Size	48 x 96 / 1220 x 2440 48 x 120 / 1220 x 3050

FINISH

- Orange peel

Note: Other sizes and colors available upon request

Distributed by:

Headquarters:
PO Box 32; 10526 Al Hwy 40
Henagar, AL 35978 USA
Ph: (256) 657-5197
Fax: (256) 657-5189
Toll Free: (877) 489-0039

Ultrapoly Division:
2404 Center Street
Tacoma, WA 98409 USA
Ph: (253) 272-1217
Fax: (253) 272-1457
Toll Free: (800) 872-8469

West Coast Distribution:
4419 West 1980 South
Salt Lake City, UT 84104 USA
Ph: (801) 363-3109
Fax: (801) 364-4381
Toll Free: (800) 220-7004

Asia Pacific:
Plot No.'s 160 c/o & 161 c/o
Cherlapally Ida Phase II
HCL Post Office
Hyderabad - 500 051 India
Ph: 91 40 2726 3375
Fax: 91 40 2726 1219

Avalanche Liner Division:
3273 West 5th Court
Oxford, WI 53952 USA
Ph: (608) 586-5100
Fax: (608) 586-5175
Toll Free: (877) 522-2382