



**POLYMER INDUSTRIES**

GEARED TOWARDS EXCELLENCE

**DENSETEC™**  
**LDPE**



Low Density Polyethylene Sheet

## APPLICATIONS

Trays

Orthotics

Chemical Industries

Environmental Barriers

Various Machined Parts

Rollers

Prosthetics

Cutting Surfaces

Stenciling Cut Outs

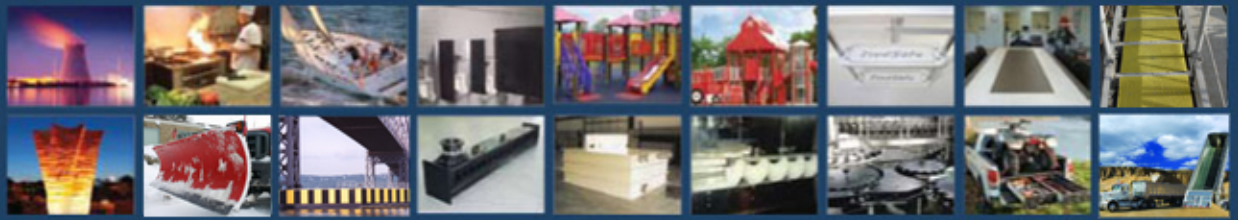
Shielding Applications



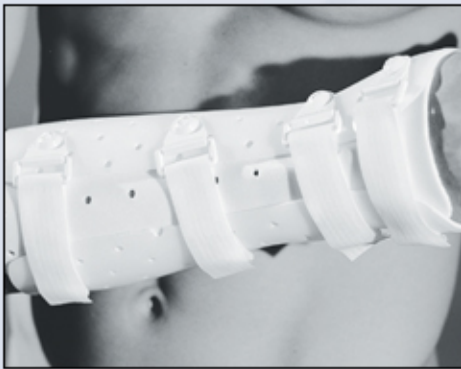
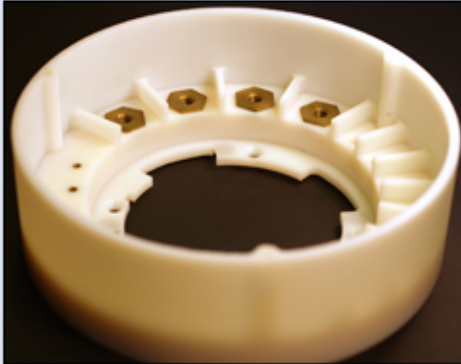
Smooth Finish



Planed Finish



## DENSETEC™ LDPE



### FEATURES

Impact resistant	Very pliable
Extremely flexible	Easily cleaned
Chemical resistant	Soft to the touch
Low tensile strength	Moisture resistant
Can be certified to Mil-P-23536 A Type V	Corrosion resistant
Mil-P-23536 A Type V certified material is inspected per Mil-I-45208 A	RoHS & REACH compliant

### COLORS

Natural*	Black
*FDA approved colors	

### SIZES

STANDARD:	<u>Extruded</u> inch / mm	<u>Compression Molded</u> inch / mm
Thickness	0.03 - 1 / 0.8 - 25	Not a Standard Product
Sheet Size	48 x 96 / 1220 x 2440 48 x 120 / 1220 x 3050	
CAPABILITIES:	<u>Extruded</u> inch / mm	<u>Compression Molded</u> inch / mm
Thickness	0.03 - 1.25 / 0.8 - 32	0.5 - 4 / 12.7 - 100
Width	45 - 144 / 1140 - 3655	48 - 96 / 1220 - 2440
Length	Up to 480 / 12200	Up to 240 / 6100

### FINISH

- Smooth - standard extruded finish
- Planed - standard compression molded finish

Note: Other sizes, colors, formulations and forming grade available upon request

#### Distributed by:

**Headquarters:**  
PO Box 32; 10526 Al Hwy 40  
Henagar, AL 35978 USA  
Ph: (256) 657-5197  
Fax: (256) 657-5189  
Toll Free: (877) 489-0039

**Ultrapoly Division:**  
2404 Center Street  
Tacoma, WA 98409 USA  
Ph: (253) 272-1217  
Fax: (253) 272-1457  
Toll Free: (800) 872-8469

**West Coast Distribution:**  
4419 West 1980 South  
Salt Lake City, UT 84104 USA  
Ph: (801) 363-3109  
Fax: (801) 364-4381  
Toll Free: (800) 220-7004

**Asia Pacific:**  
Plot No.'s 160 c/o & 161 c/o  
Cherlapally Ida Phase II  
HCL Post Office  
Hyderabad - 500 051 India  
Ph: 91 40 2726 3375  
Fax: 91 40 2726 1219

**Avalanche Liner Division:**  
3273 West 5th Court  
Oxford, WI 53952 USA  
Ph: (608) 586-5100  
Fax: (608) 586-5175  
Toll Free: (877) 522-2382